

UPC-56T/57T, 2.0" (50.8mm) Round Outlets



UPC-56TB

Model Key

Unico Part Code	Model	Connection Type	Revision	Finish	Mounting Type	Qty.
UPC-	56	T	B	-BLK	-F	-6

* See page 3 for complete list of materials and colors.

Model

- 56 = Plastic Outlet Face Plate
- 57 = Wood Outlet Face Plate

Connection Type

- T = Twist-Fit System® Couplings pre-installed

Finish/Color

- (blank) = White (UPC-56T only)
- BLK = Black (UPC-56T only)
- BRS = Brass (UPC-56T only)
- CHR = Chrome (UPC-56T only)
- B = Birch
- C = Cherry
- K = Knotty Pine
- MA = Maple
- MH = Mahogany
- PI = Pine
- PO = Poplar
- RO = Red Oak
- WL = Walnut
- WO = White Oak

Mounting Type

- (blank) = Surface Mount
- F = Flush Mount

Quantity

- Available in quantities of 1 or 6

APPLICATION

The Unico System Supply Outlets are used to terminate and anchor the Supply Duct to a ceiling, floor, or wall and to provide quiet delivery of high velocity air to the conditioned space. The 0.25-inch (6 mm) thick raised face plate is the only part visible in the room. Unico round outlets are available in a variety of colors and materials as shown on page 3. The standard Twist-Fit System Outlet Face Plate (UPC-56TB) comes in white plastic.

The wood faced outlet (UPC-57T-**) is identical in size to the standard outlet except for the unfinished solid wood face, which can be stained and finished to match your existing floor. The last two spaces (XX) in the part number for the wood outlet designate the wood type. Wood outlet faces are offered in a variety of wood types.

The Twist-Fit System™ (TFS) provides fast and easy attachment of 2-inch supply duct from the plenum to the outlet. The TFS Outlets (UPC-56TB and UPC-57T) have all the face plate options of the UPC-56B/256 and UPC-57/257 with the benefit of a quick and easy installation.

All outlets can be painted or stained to match any décor and the UPC-56TB is available in white, black, brass, or chrome, and the UPC-57T is available in a variety of wood species. The UPC-56TB are shipped with toggles and screws.

SPECIFICATIONS

Recommended airflow:	30 to 35 CFM (14 to 16.5 l/s) 20 to 40 CFM (9.4 to 18.9 l/s) acceptable
Recommended number of outlets:	6 per nominal ton (1.7 outlets per kW)
Outlet material:	30% glass filled Polypropylene UL-94 Rating-HB (UPC-56TB) wood, unfinished (UPC-57T faceplate)
Size of opening:	4-inch (100-mm) or 3-3/8-inch (86-mm)
Weight:	UPC-56TB (plastic): 3.0 oz (85 g) UPC-57T (wood): 4.2 oz (119 g)

INSTALLATION

For installation instructions of the Twist-Fit System Outlets to other TFS connectors or supply ductwork, see Bulletin 30-051 Twist-Fit System Installation Instructions, and Bulletin 30-054 Twist-Fit System and Supply Duct Install Instructions.

DIMENSIONAL DATA

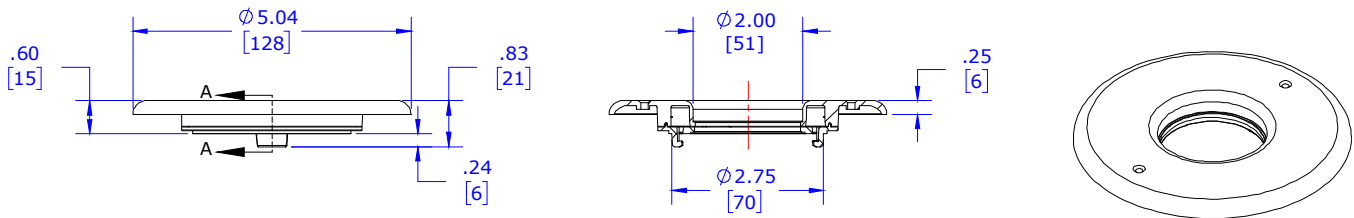


Figure 1. UPC-56TB, Faceplates Dimensions (2-inch only)

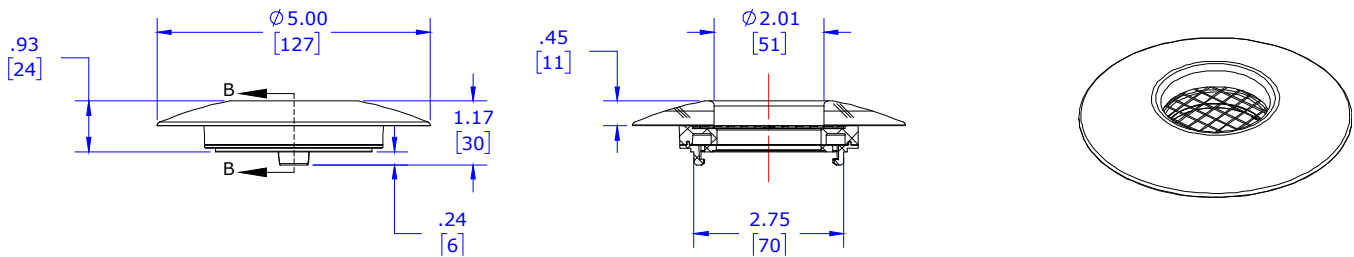


Figure 2. UPC-57T, Wood Faceplate Dimensions (2-inch only)

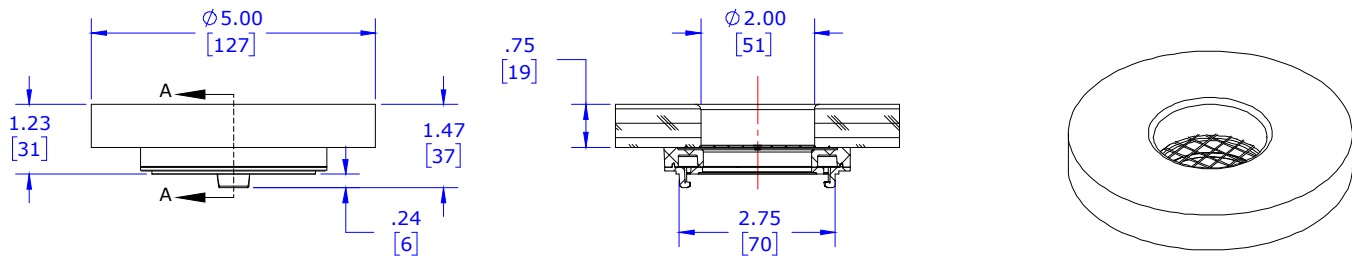


Figure 3. UPC-57T-XX-F, Flush-Mount Wood Faceplate Dimensions (2-inch only)

Unico Outlets are available in the following optional finishes:

UPC-56TB



White (blank)



Black (-BLK)



Chrome (-CHR)



Brass (-BRS)

UPC-57T-XX



Red Oak (-RO)



Knotted Pine (-KP)



Maple (-MA)



Mahogany (-MH)



Pine (-PI)



Poplar (-PO)



Cherry (-CH)



Walnut (-WL)



White Oak (-WO)



Birch (-BR)